

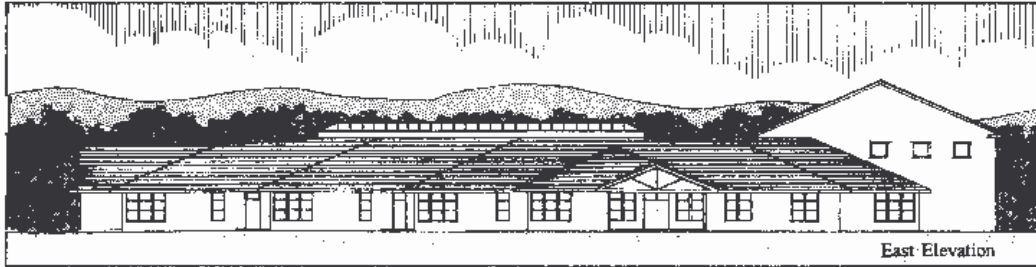
**Heath Elementary School**  
18 Jacobs Road  
Heath, MA 01346  
Charlemont, MA 01339 (mailing)  
413 337-5307  
413 337-5507 (fax)  
[www.heath.k14.mass.edu/](http://www.heath.k14.mass.edu/)

# **Heath Elementary School Improvement Plan**

**2007-2008**

## **Table of Contents**

- 1. List of Council Members – page 3**
- 2. Executive Summary/Historical Narrative – page 4**
- 3. Progress for 2005-2006 Goals – page 8**
  - a. Curriculum and Instruction**
  - b. School and Community Relations**
  - c. Extracurricular Activities**
- 4. Overview of Goals for 2006-2007 – page 11**
- 4. Individual Goal Pages with Action Plans – page 12**



**Heath Elementary School Council  
Membership  
2006-2007**

**Anne Mislak, Principal, Chair**

**Ned Wolf, Community Member  
Don Freeman, Community Member\*  
Kerrie McNay\***

**Suzanne Crawford, Teacher  
Julie McCarthy, Teacher**

**Dana Blackburn, Parent  
Rebekah Boyd-Owens, Parent  
Phoebe Walker, Parent**

\*Resigned in March, 2007

### **Executive Summary**

On June 20, 2006 the Heath Elementary School completed its eleventh year with 75 students, PreK through 6 in attendance. Despite severe budgetary challenges and considerable energy being directed toward discussions involving the future of the Mohawk District, this has been a vigorous and productive year for Heath children and their families. Although the classes are small the realities of teaching multi-age groupings continue to be enormously demanding in the face of the rigorous standards required by the curriculum frameworks. Reflecting upon the year, it appears that a dominant focus was not only on examining student achievement in reading and math, but in truly understanding and nurturing the needs of the entire school community. In light of the shared principal model, roles have been identified and solidified to support the students, families and community. This process will continue next year

**The Heath School Philosophy  
Revised Statement  
April 2006**

The Heath School community believes that a well-balanced educational program, which promotes rigorous academics, creative endeavors, and social responsibility, will best prepare our children for a lifetime of learning as active and caring citizens in a democratic society.

**Core Values**

The following is a list of the Heath Elementary School's values that, when integrated into the daily life of our school, empower children to interact effectively and compassionately with local, national, and global communities. By demonstrating a commitment to these values as a community of learners, we recognize and honor our connection to those who have come before us and our responsibility to those who will follow.

**Note: The values in bold were added this year.**

- We value respect of others and ourselves.
- We value the development of and participation in community.
- We value open-mindedness and diversity of viewpoints.
- We value the courage to challenge oneself academically, intellectually, and socially.
- We value high expectations and standards of excellence, keeping in mind the uniqueness of each learner.
- We value an understanding and appreciation of our natural, cultural, and social environments.
- We value service learning and civic-mindedness.
- **We value parents as their children's first teachers and as essential to their education.**
- **We value the mutual partnership of families and teachers in support of children's learning.**
- We value the building of character to include a sense of justice, honesty, and integrity.
- We value that each teacher is a learner and a teacher to every student and to each other.
- We value that staff and students meet regularly to set goals, plan, share, learn, and reflect.
- We value the creation of a continuum of learning throughout the school and across disciplines.
- We value developing self-discipline, perseverance, and a strong work ethic.

- We value a welcoming, joyful, and hospitable environment in which all are included, invited, and have a place.
- We value a commitment to problem-solving and critical thinking.
- We value optimism, gratitude, kindness, forthrightness, and a sense of humor.
- We value the culture and character of our school and will help one another, especially the new, to grow in understanding and maintaining its traditions.
- We value greeting change proactively.

## Progress Report for 2006-2007

### Curriculum and Instruction

#### Goal One:

Improve student learning and achievement in literacy and math to ensure AYP

WINK was completed with help from UMASS graduate students and volunteers.

Teachers participated at the district level (grade level) reviewing writing samples with rubrics developed by the staff.

There was a Fall Literacy night focusing on reading.

Bi-weekly MCAS newsletter were sent home to all families.

Weekly Math Challenge was given for first half of the year only. Participation was minimal.

The LEC developed a survey, which is being piloted and reviewed for dissemination in the fall.

The Message board was used each morning, becoming more interactive.

Displays in dining area occurred on a rotating basis and were mostly adult initiated. Open space displays were tied into curriculum and were developed by classroom or all-school themes.

Reading buddies met on a weekly basis.

A summer reading program was very successful with at least 80% of the students receiving a certificate from the PTP at the beginning of the school year for reading a number of "pages" during the summer.

#### Goal Two:

Focus professional development on Understanding by Design

The book was completed by staff through discussions at staff meetings and on Early Release Days. The staff worked at the District level to develop science unit with other teachers of the same grade level.

#### Goal Three:

Continue community-based integrative project learning

The staff discussed throughout year but no specific decisions were made.

Through Todd Fund as well as PTP classes are working with consultant, Ted Watt either in the spring or fall. This will be ongoing on a yearly basis so that staff can plan into their yearly curriculum development.

### School & Community Relations

#### Goal One:

1. Support and nourish positive school culture during leadership transition

Each staff member has taken on roles to assure continuation of all aspects of the Heath School. Staff developed protocols that were used throughout the school year.

Meetings were held each month through T3, Dialogue, IA and workshops as well as weekly Nuts and Bolts for entire staff.  
The Principal binder was completed and housed in the Principal's Office.

**Goal Two:**

Continue to maintain focus on revisiting and solidifying social curriculum, integrating Second Step

During Nuts and Bolts weekly meetings the entire staff has been reviewing and revising discipline procedures at the school incorporating Responsive Classroom techniques. Incorporated on a consistent basis are the techniques of "Sit and Think" and "Buddy Teachers".

The Physical Education teacher taught recess in the fall by teaching games to the students and then proceeded to share in the form of a guide to teachers and parents.

To integrate global and cultural awareness a world map was purchased for the dining room. Students attended a performance and received performers in the school that were of a different culture and background.

**Goal Three:**

Strengthen parent and community involvement

Parent and community volunteers were utilized in the classrooms as well as with all-school projects. A Volunteer luncheon was held in June to thank all the volunteers. Weekly newsletter was sent home to all families with periodic updates on LEC meetings. Principal coffees were held on a bi-monthly basis.  
Website was maintained but not expanded

**Extracurricular Activities**

**Goal One:**

1. Continue to expand After Hours/in school enrichment and tutoring activities

After-school Enrichments of Sports, Drama, and Crafts were initiated by parent volunteers/coordinators. At times Rowe students or coaches participated in the activities as well as outside groups such as Double Edge Theatre working with Drama Club. Funding was secured through PTP as well as Arts Council Cultural Grants. The Strings Program was held in school on a weekly basis funded through private donations/fees and fundraising.

**Goal Two:**

Continue to promote learning through civic/community service and outreach, consistent with our role as a community-based school.

The periodic food collection for Good Neighbors Food Pantry has been very successful, and the children's help has proved vital.

As explained in Goal #3 of Curriculum and Instruction, funds have been provided for classrooms to work with consultant in the integration of the environment into curricula.

## **Heath Elementary School Improvement Goals 2007-2008**

### **Curriculum and Instruction:**

- |   |
|---|
| <ol style="list-style-type: none"><li>1. Improve student learning and achievement in ELA (English/Language Arts) and Math to ensure AYP</li><li>2. Focus professional development in Science and Multiage teaching</li><li>3. Continue project-based learning, environmentally based with a community service component</li></ol> |
|---|

### **School & Community Relations:**

1. Support and nourish positive school culture
- |   |
|---|
| <ol style="list-style-type: none"><li>2. Continue to maintain focus on revisiting and solidifying social curriculum.</li><li>3. Strengthen parent and community involvement</li></ol> |
|---|

### **Extracurricular Activities:**

- |  |
|--|
| <ol style="list-style-type: none"><li>1. Continue to offer After School and In school enrichment activities</li><li>2. Continue to promote learning through civic/community service and outreach, consistent with our role as a community-based school</li></ol> |
|--|